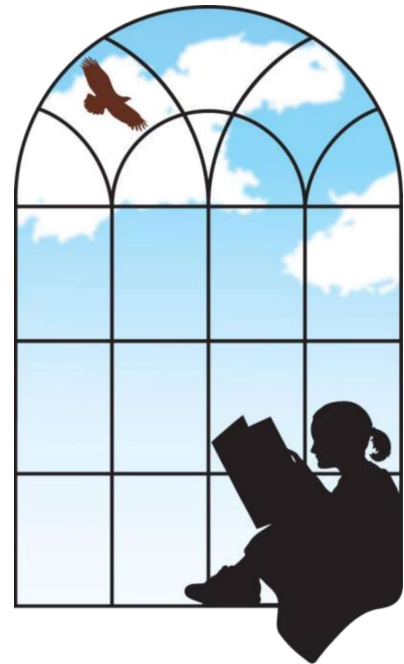




## **Ellsworth Public Library**

The Ellsworth Public Library is a vibrant and essential community resource, educating and inspiring the people we serve.



## **Budget Briefing Report**

The Ellsworth Public Library is the largest library in Hancock County, serving Ellsworth and 18 surrounding towns. Ellsworth functions as a service center for a broad geographic area, which is reflected in the library's service population of around 25,000.

The library, a historic house deeded to the city to become a library, was established in 1897 at its current site. An addition was built in 1991. The library is 12,500 square feet and contains over 40,000 volumes.

The library's patron base is economically diverse. As a coastal community, Ellsworth has a significant seasonal population resulting in a spike in usage during summer months into early fall.

card holders

**4,023**

circulation increase  
(year over year)

**114%**

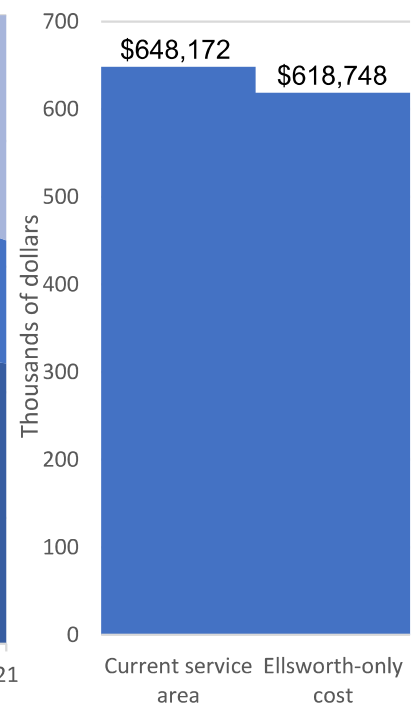
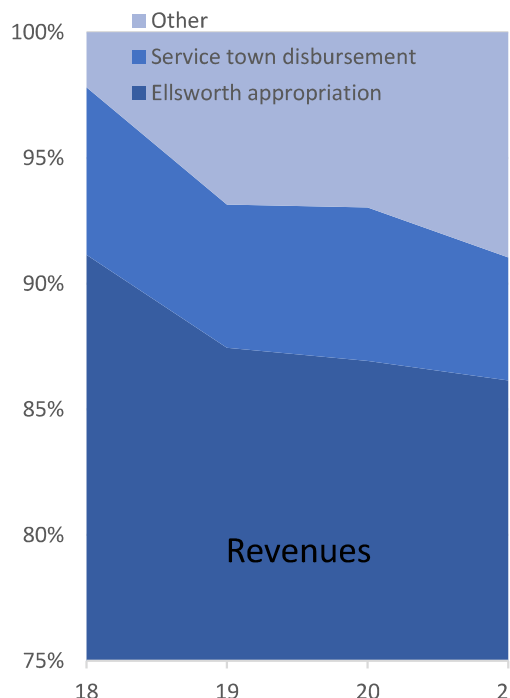
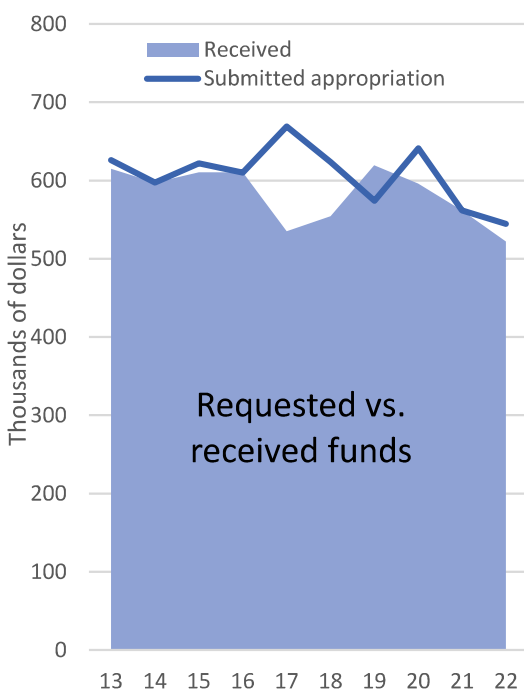
computer sessions  
(FY 20 -21)

**20,561**

visits  
(FY20 -21)

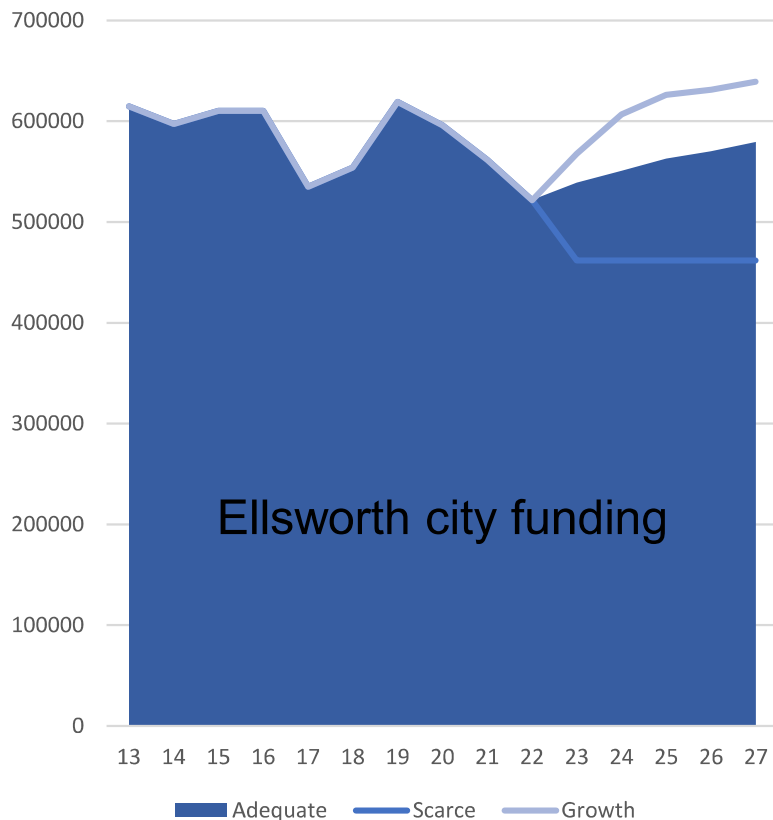
**71,885**

# Finances





# Adequate funding



This is the budget submitted by the Ellsworth Public Library board of trustees. It would preserve current staffing levels, services, and hours.

The library would expand fundraising to maintain its collections in order to partially offset the slight FY23 increase.

Future adequate funding includes small increases to the city appropriation to account for personnel cost increases (insurance, etc.) and fixed costs (postage, power, heat, etc.) over time.

Grow fundraising

Grow service area town funding

Grow cardholder fee revenue



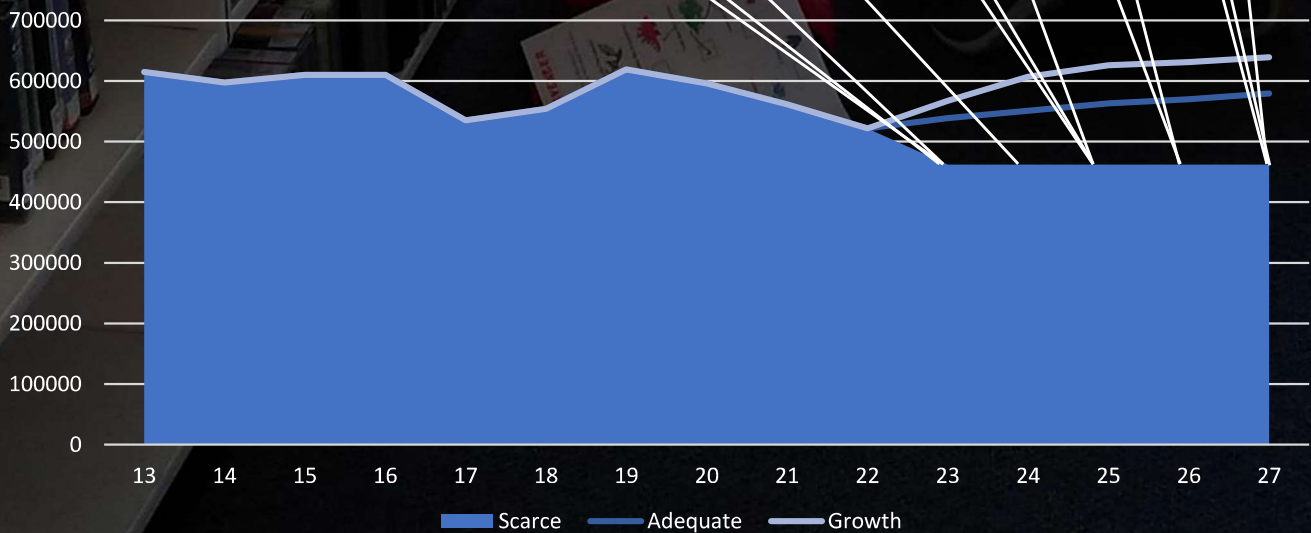
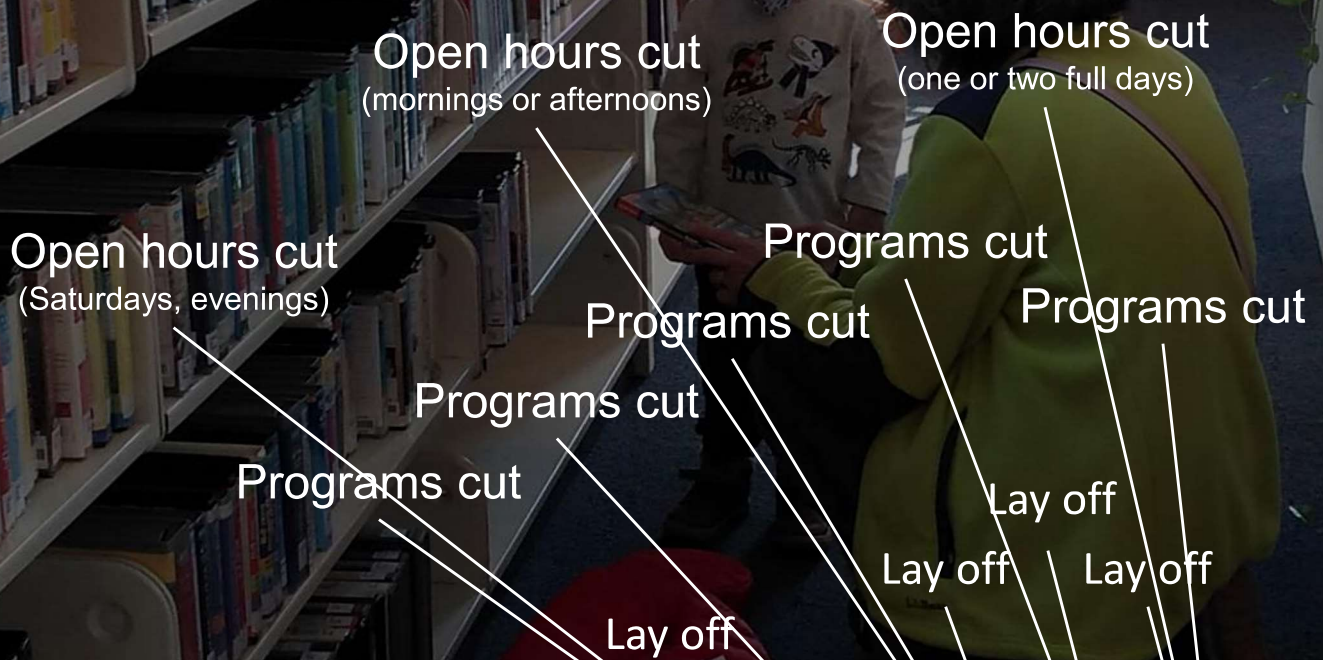


# Scarcity funding

In this scenario, the city provision is flat over time.

If city council chooses to level fund the library over the next five years, the cuts to staffing, hours and services will be significant. Other funding efforts would continue to be pursued, but it is unlikely they would be able to offset both lost city funding and increasing fixed costs.

The library would need to cut staffing by approximately 2 FTE (currently we are at 9.3 FTE) which would necessitate a drastic reduction in hours and services.



# Growth funding

Expanded services include more support for special collections research, more technology/reference assistance, and the creation of a small business center with improved technology access.

The addition of a bookmobile would provide access to elderly and disabled patrons who would otherwise be unable to borrow material due to limited transportation options.

