

WELCOME!

August 13 | 6:30 PM
Public Meeting

Library Renovation

THE PURPOSE OF THIS PUBLIC MEETING IS TO CREATE A TWO-WAY COMMUNICATION CHANNEL BETWEEN THE LIBRARY PLANNING TEAM AND THE COMMUNITY.

Table of Contents

1.

Intro & Survey Results

Information we have gathered through our public survey.

2.

Ideas

Presentation of staff ideas

3.

Open Forum

Please share your thoughts and ask any questions related to this project.

4.

Community Engagement: Committees

Get involved and support our renovation project!



Why change anything?



Changing Needs

- Remote work
- Gathering space
- Patron assistance

Safety

- Code violations
- Child safety

Accessibility

- Create an inclusive, empowering environment





7,343 July 2024 visitors

282 people per day!

36% increase from 2023

5,396 July 2023



7,829 circulated materials

July 2024

15% decrease from 2023

9,297 July 2023 circ





Overall Stats

The Survey

The Survey was live for the month of July 2024 and publicized through networks, on social media, in our newsletter as well as on local radio, TV and in the newspaper.



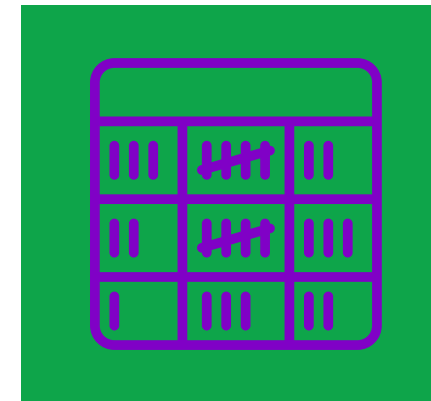
6 Questions



161 Participants



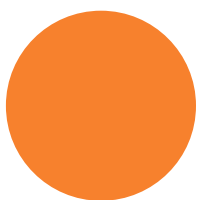
164 Open Question
Replies



Most respondents
are weekly visitors



Some questions
were skipped



Different Opinions

"Honestly, I feel the library is pretty much perfect. I love it the way it is and I have never felt there was a shortage of space."

"Also, the lighting is horrendous. Ultra bright with reflections off anything shiny. Perhaps some low table lighting for those little quiet areas."

"I love the library and its historic charm. Enhancing some of these features while emphasizing the Union River would be so wonderful for the community."

"bigger play space and move children's area away from front entrance"

"At times it has been distractingly noisy while I have been on a library computer"

*Books are still a major focus of why I visit!
Maybe organize/separate those areas a little better? Love our EPL!*

"Budget is always restricted in our town but I am pretty sure that this effort to update and create a welcoming community space is a positive thing."

Just comfy spaces to sit and read with my daughter in the kids area.

"As to changing the artwork, lighting, furniture etc, I do not feel that this time is when those things should be upgraded. The economy is not good and to me that would look like a waste of the taxpayers money. I'd rather see money spent on purchasing more books instead!"

"The mood and ambiance are very important. I believe that the Ellsworth library lacks in that area... The front step of this library is not welcoming to all with physical issues. I know it was fixed but it still lacks."

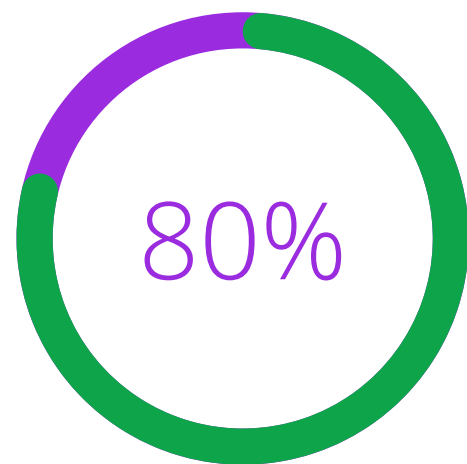
"Great library headed in the right direction, it's smart to rethink the layout and space."

What is important when using the library?

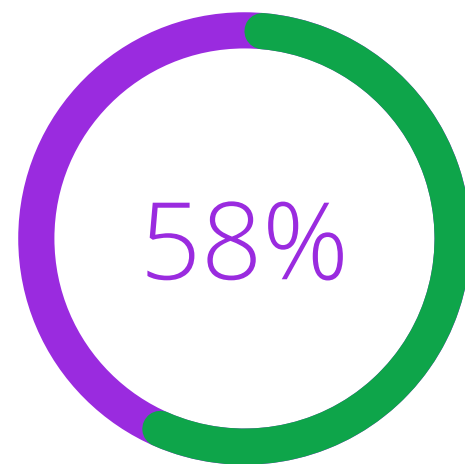
Question 1 of the Survey

Top 5

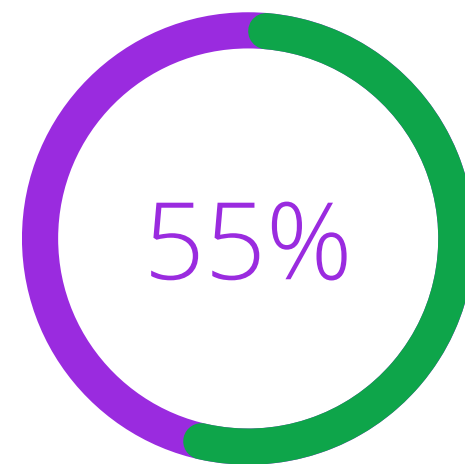
161 responses



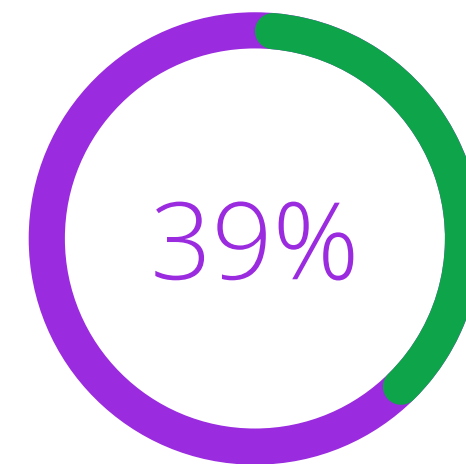
Ease of
borrowing
Materials



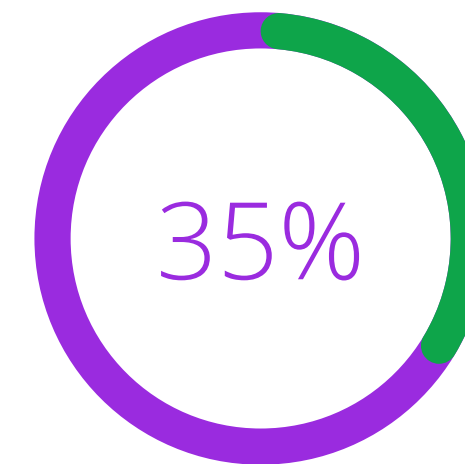
Improved
Accessibility



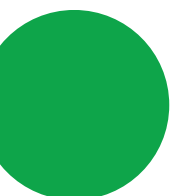
Child-
friendly
Areas

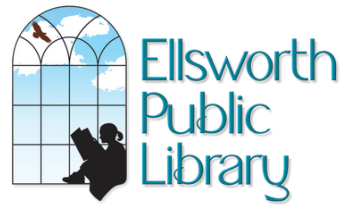


Comfortable
Reading and
Study
Spaces

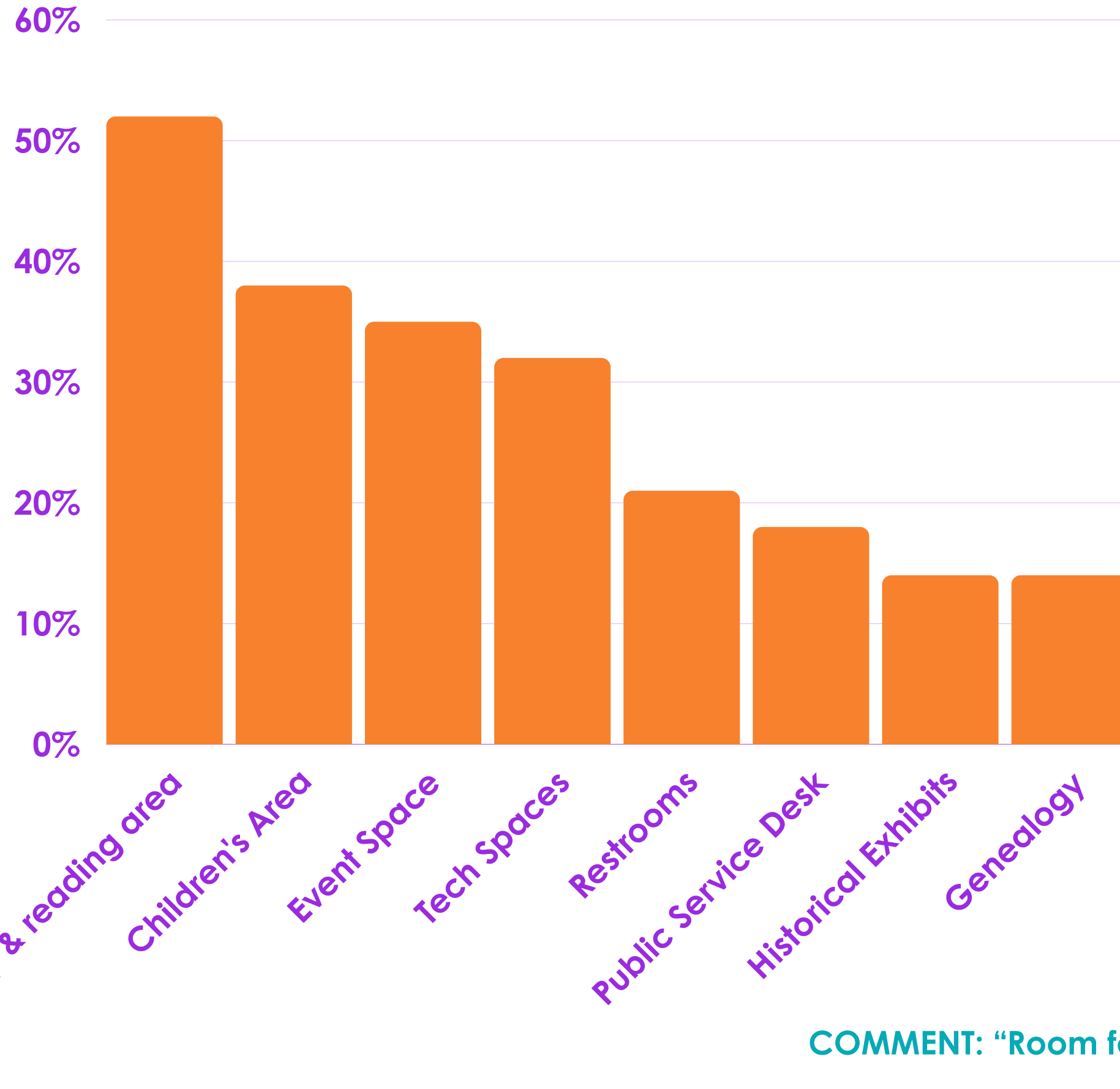


Access to
Internet &
Technology





Survey Results



Question 2:

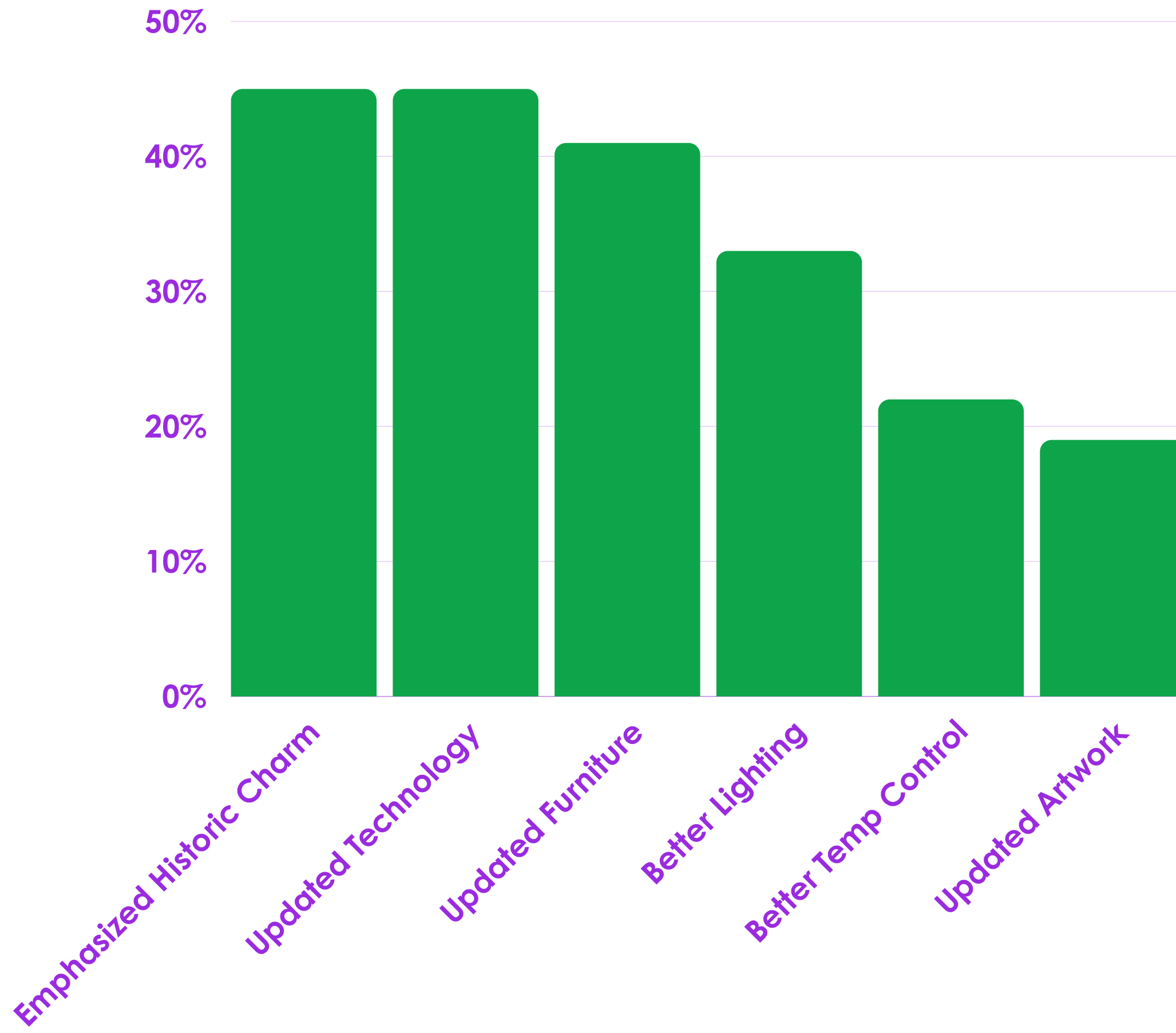
Which areas of the library need to be most expanded/improved? Please select 3.

138 responses

52.1%
**Quiet reading
and study areas**

COMMENT: "Room for several groups to meet without disturbing other spaces"

Survey Results



Question 3:

Which changes would most improve your experience at the library and make your visit more enjoyable? Select up to 3.

121 responses

45.4%

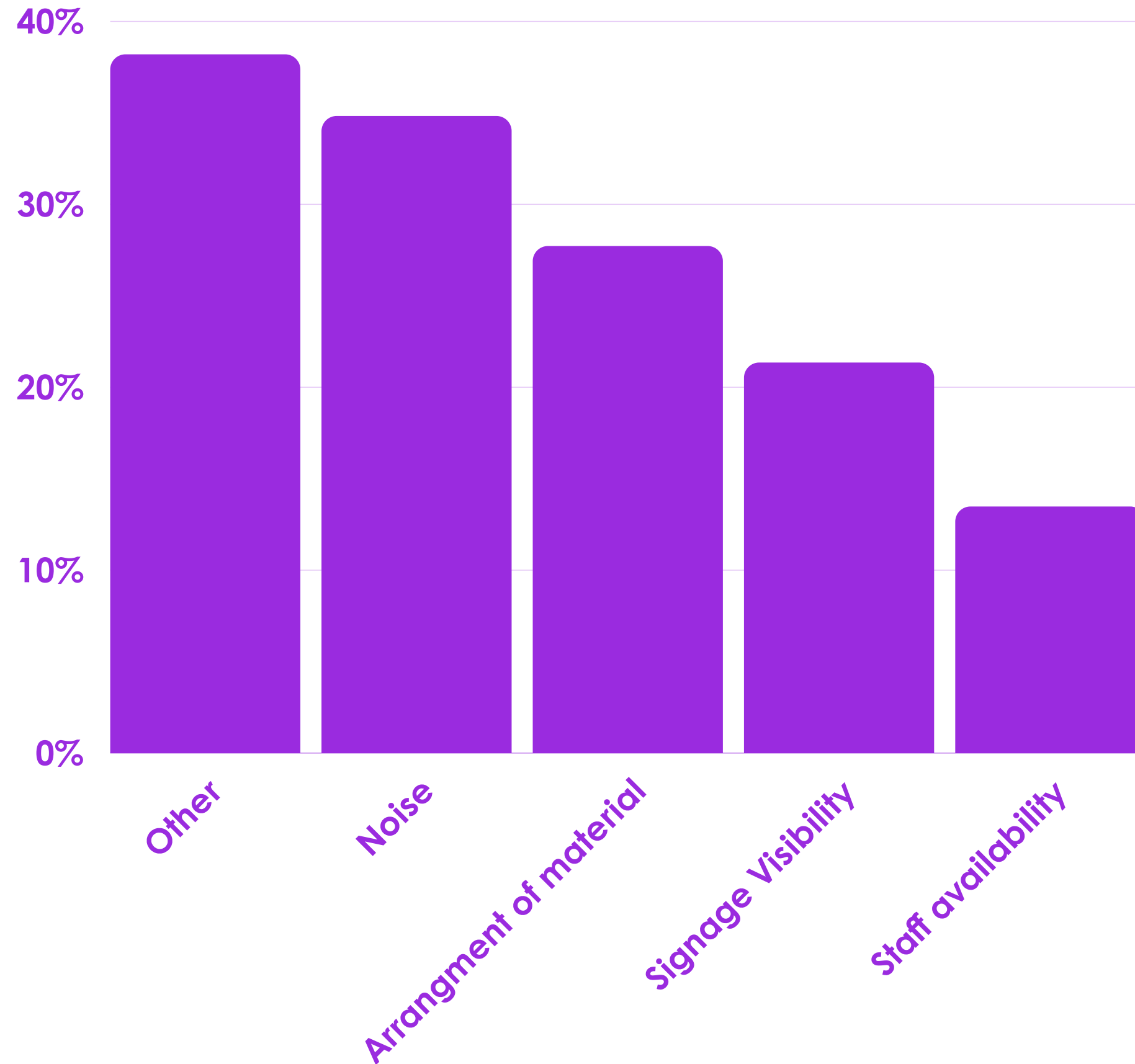
Emphasized historic charm

44.6%

Updated technology

COMMENT: "Don't spoil the building"

Survey Results



Question 4:

Have any of the following negatively impacted your use of the library? Select all that apply.

89 responses, 72 skipped

38.2%
Other

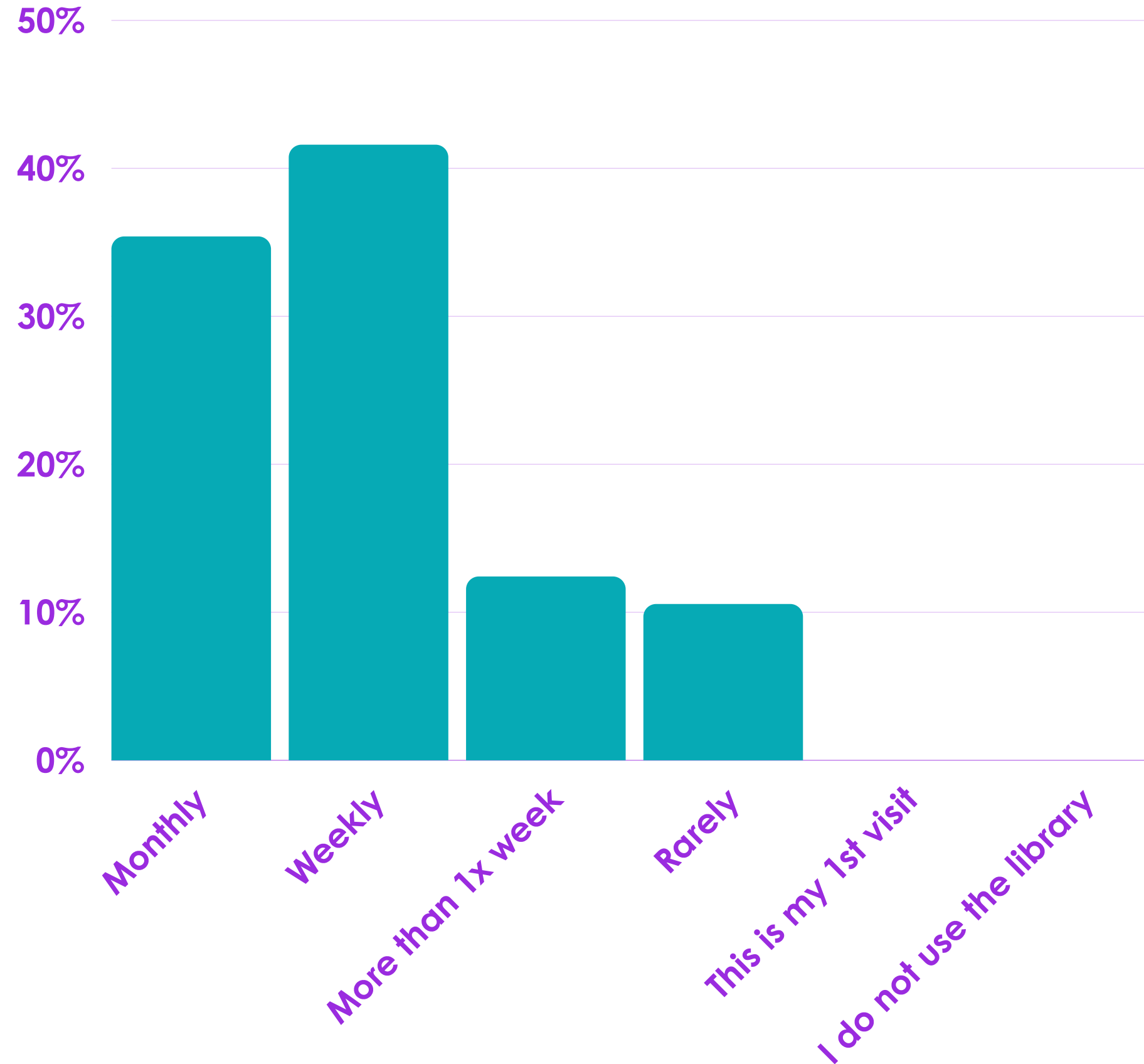
34 Comments

12 out of 34: **No negative impacts**

10 out of 34: **Parking/accessibility**

5 out of 34: **Noise**

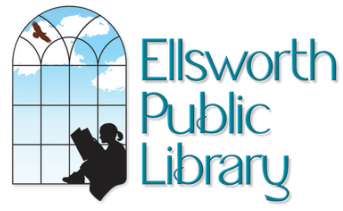
Survey Results



Question 5:

How often do you visit the library?

42%
Weekly



Survey Results

Question 6:

Do you have any suggestions or comments?

62 responses

“The librarians have cramped quarters behind the checkout counter. Please redesign their area”

“Needs a complete overhaul.”

“I trust you will do it thoughtfully.”

“A more interactive, imaginative children’s area would be wonderful.”

“Doesn’t necessarily require more volumes but the layout and furniture is dated.”

“Keep up the good work.”

“Have a person drive a golf cart back and forth from the parking spaces across street behind Sweet Spot Shop. Have a pick up Sign to stand by. Drop guests off at library back door. Every 30 minutes make rounds for pick up and drop offs.”

IDEA 1

New entry way

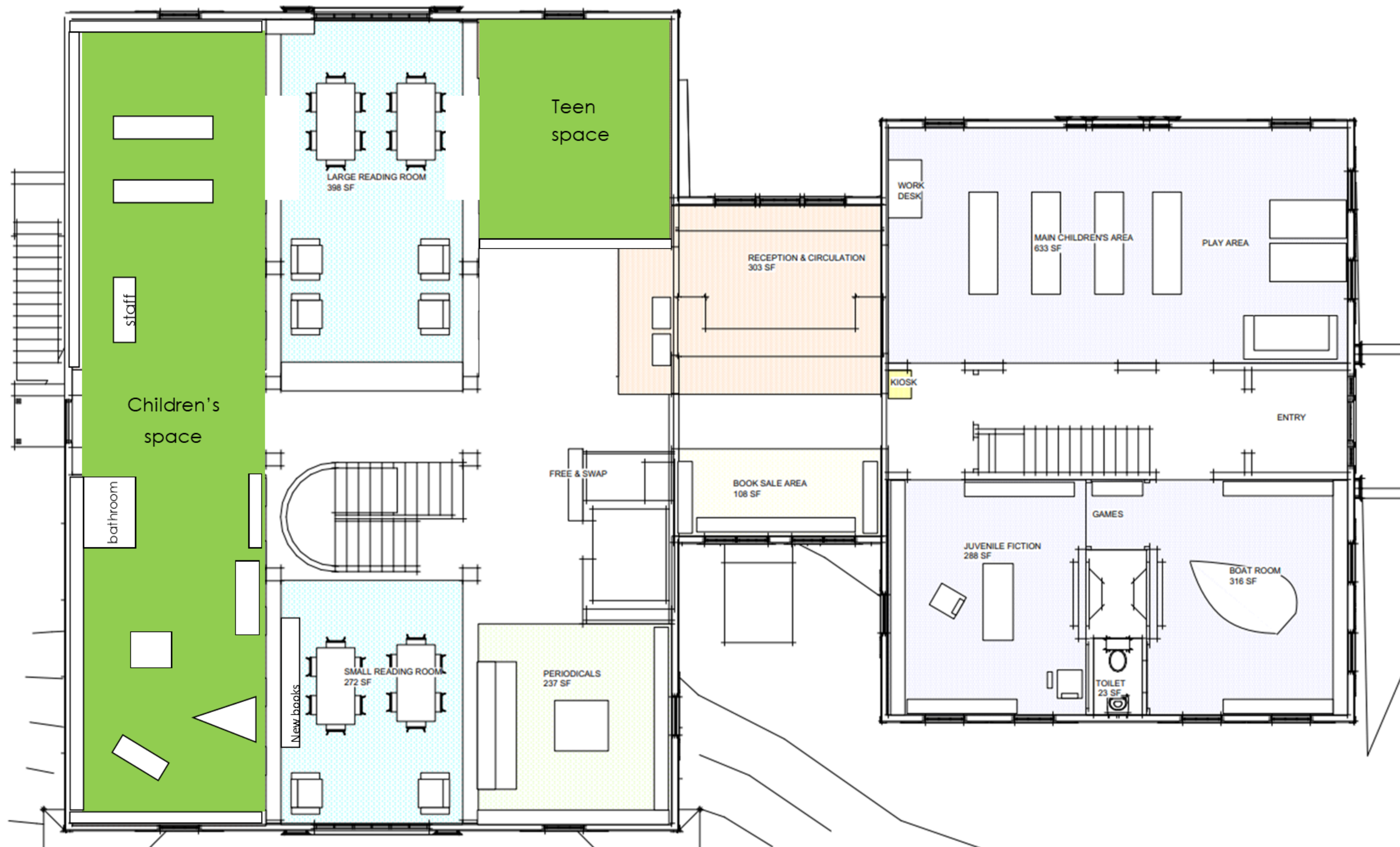
- Increases accessibility
- Preserves the historic Tisdale House entrance



IDEA 2

Relocate youth spaces

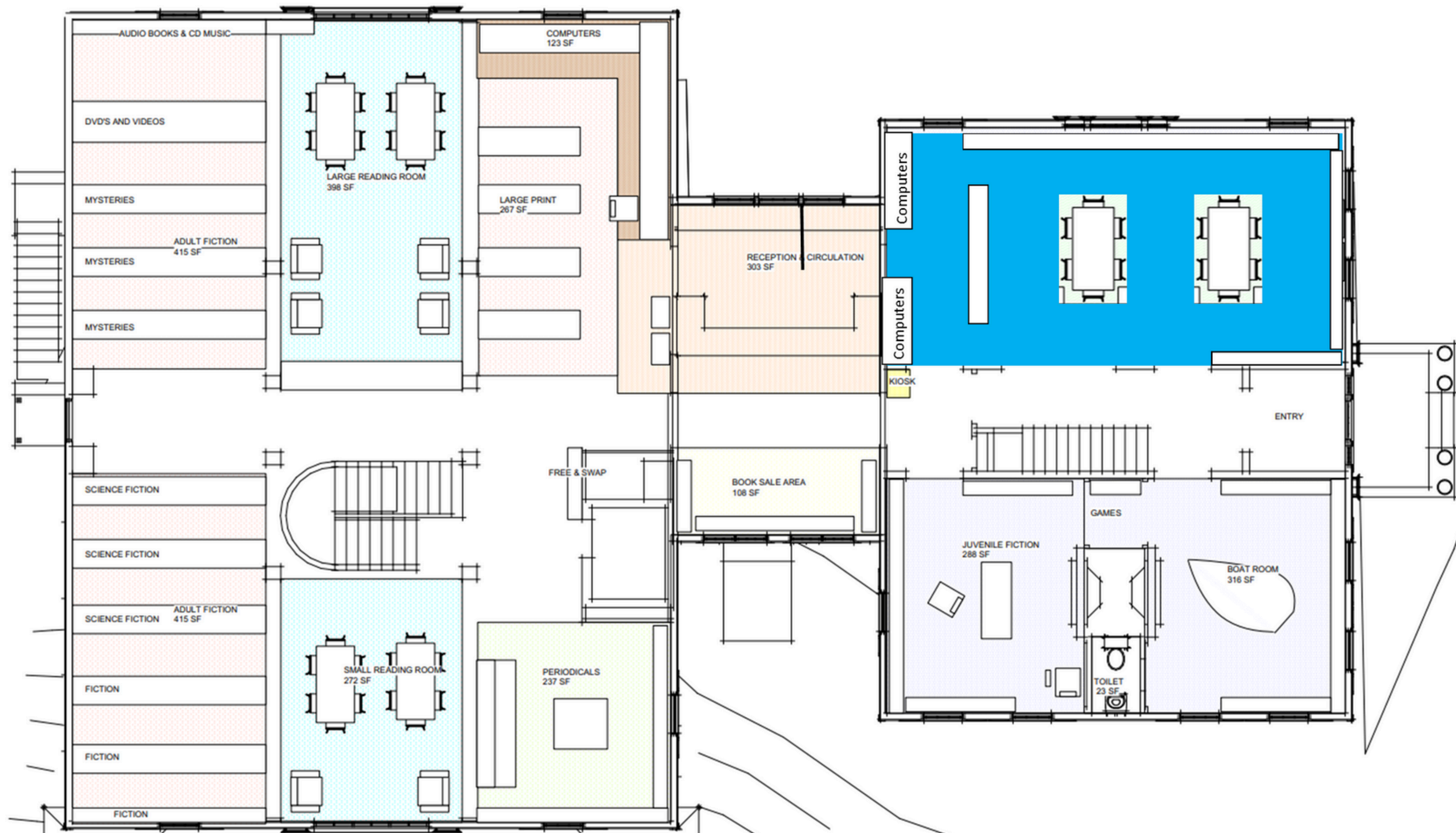
- Increases child safety
- Reduces noise level throughout the building
- Unites all youth spaces



IDEA 3

Relocate genealogy collection

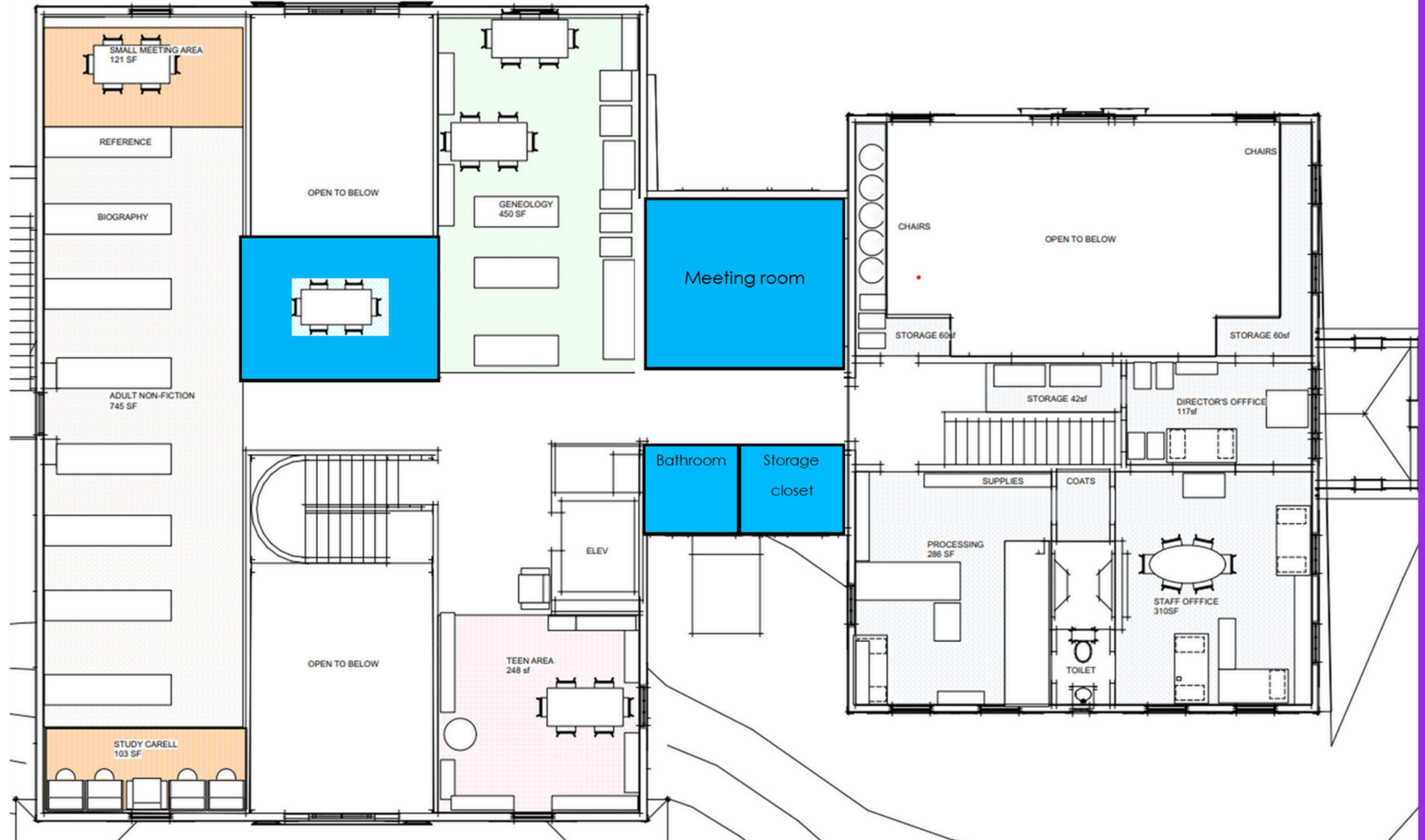
- Natural fit for the historic space
- Highlights the collection



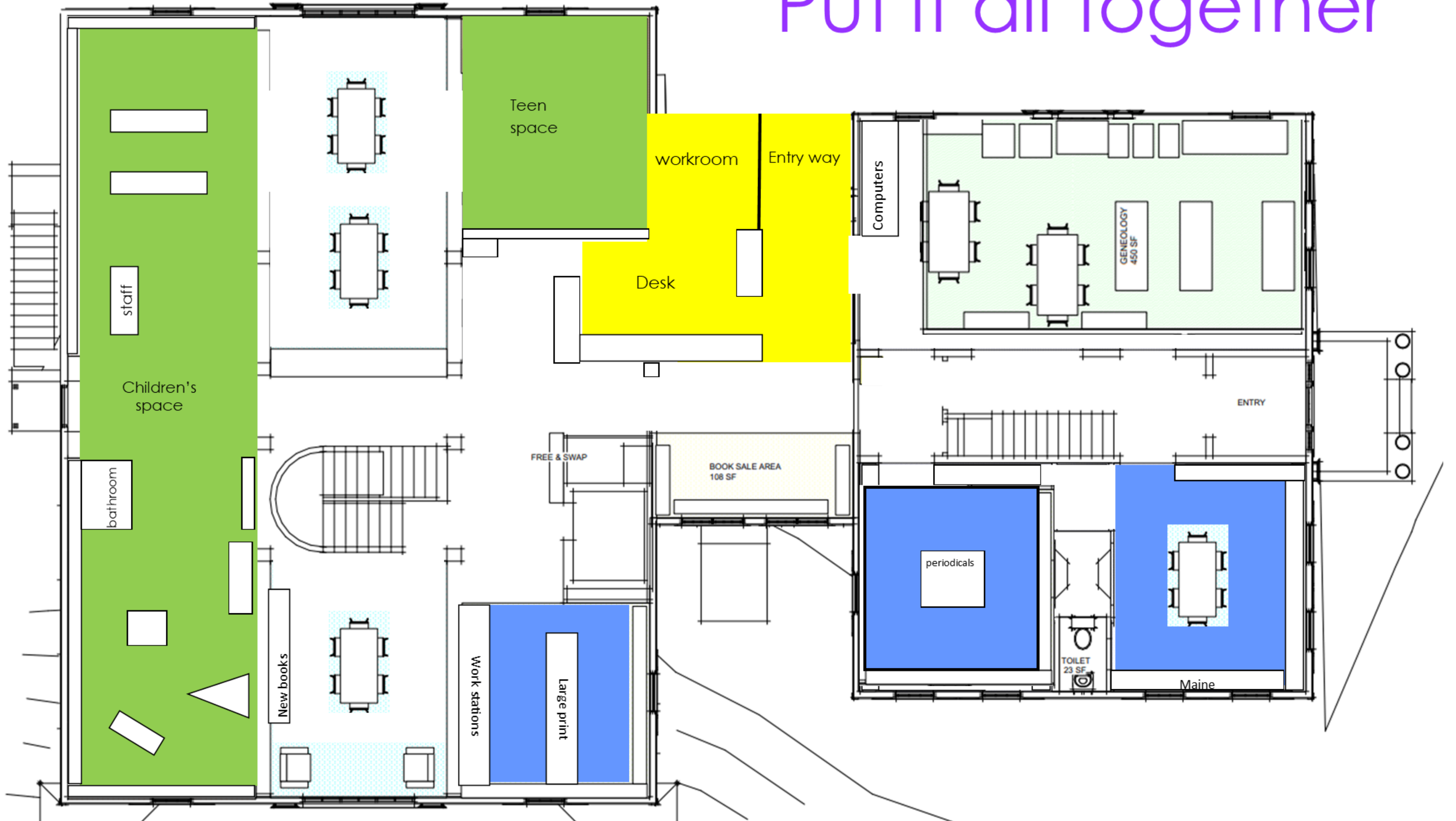
IDEA 4

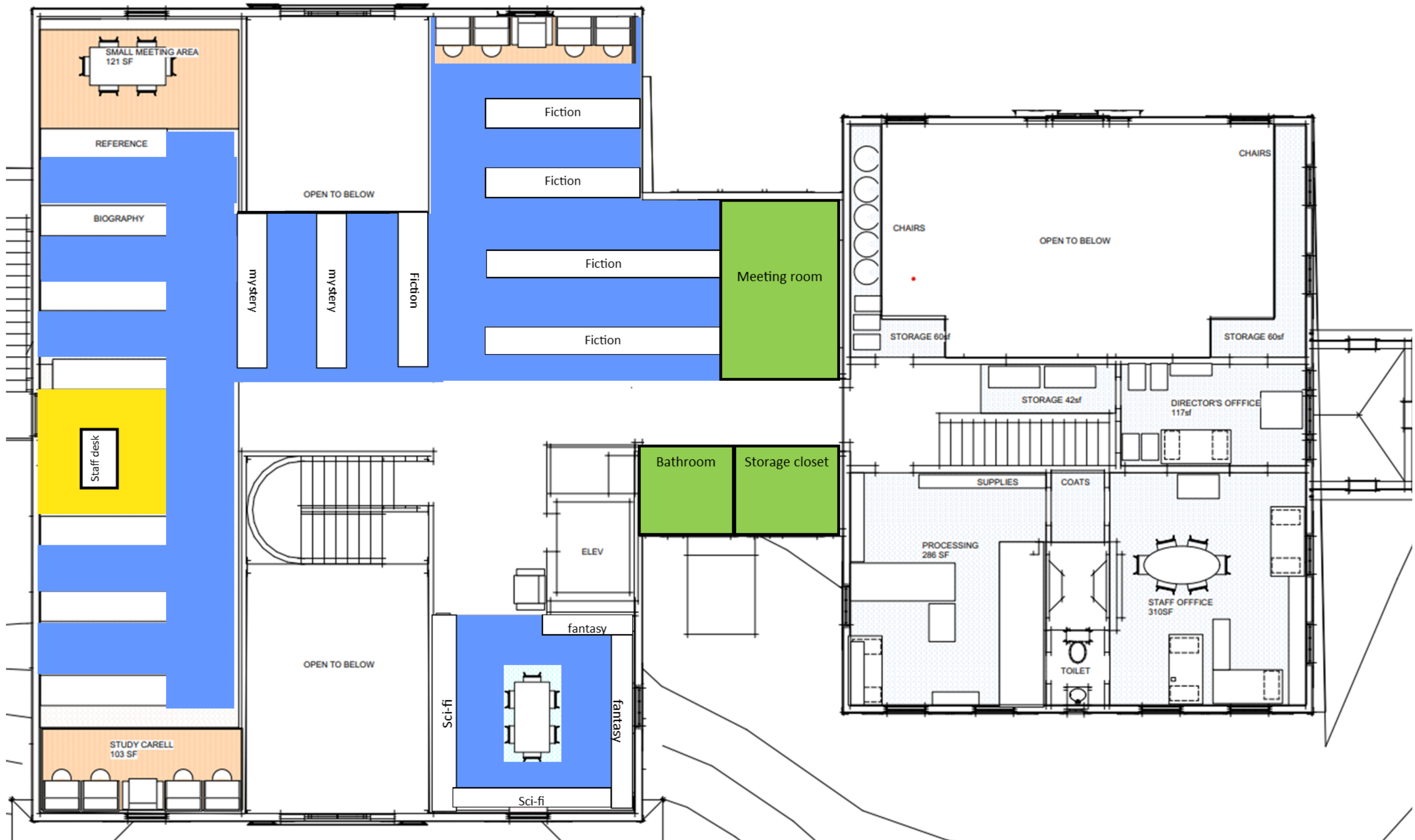
Add square footage

- Floor over the public services desk area, Friends' bookstore, and portion of State St. open area
- Add meeting room, storage, & bathroom



Put it all together





QUESTIONS & THOUGHTS

PROJECT TIME LINE

**June 2024 -
January 2025**

Gather Information

Form Committees

Set budget

Prep CDS Application

**January 2025 -
January 2026**

Design

Fundraising

Grant applications

**February 2026 -
August 2026**

Prep for construction

How can we rearrange
to stay open during
construction? (relocate
public services desk)

Continue fundraising

Fall 2026

Begin construction

Community Engagement

While the staff spends the most time at the library and has a clear idea of what needs to be changed to improve visitor's experiences, getting involved in a committee is a great way to advocate for your and your community's needs.

Fundraising

Events
Merchandise
Grants
Capital Campaign?

Spaces

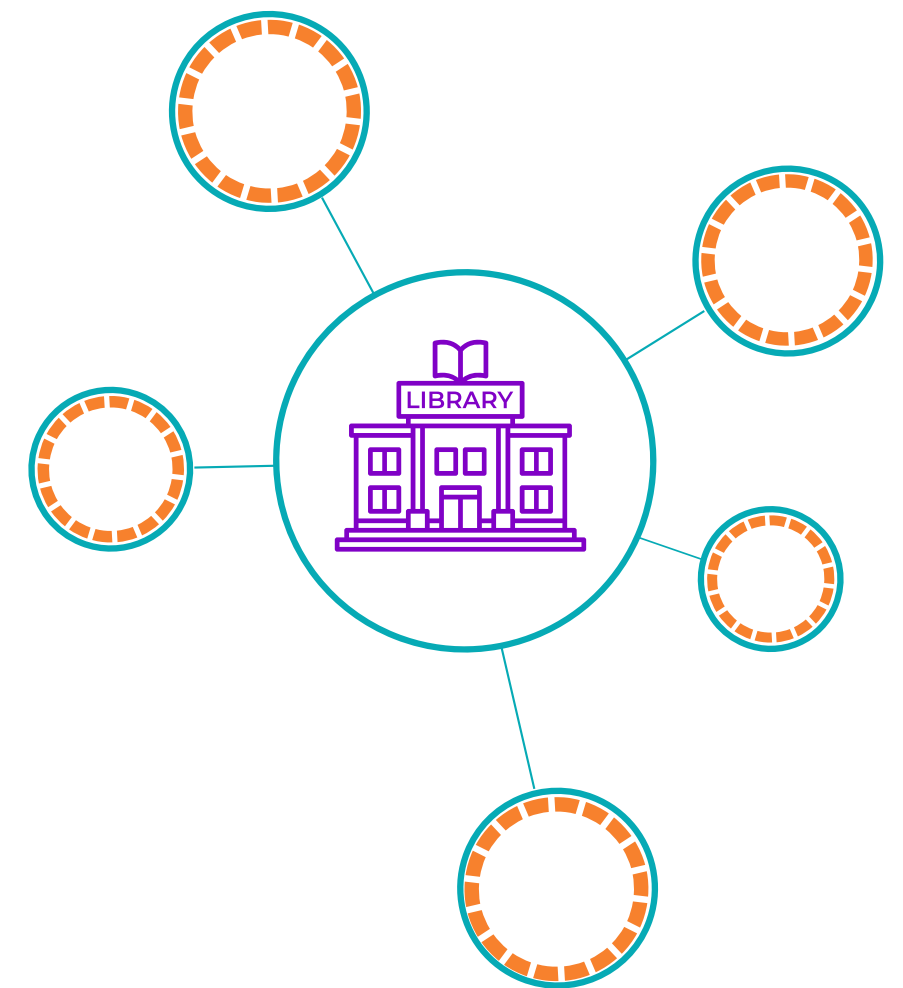
Imaginative play space
Tween/teen services
Collections
Technology

Style

Interior painting
Lighting
Furniture
Historical accuracy

Building

Continue needs assessment
Update facilities survey
Concept Design
Budget





**THANK YOU FOR
BEING HERE TODAY!**

**TO DOWNLOAD THIS PRESENTATION GO TO
ellsworthlibrary.net/space-planning-survey-2024/**